

Product Specification Sheet

Autoradiography Ruler Set

Phosphorescent, Non-Radioactive Metric Rulers for Radiographs

FEATURES

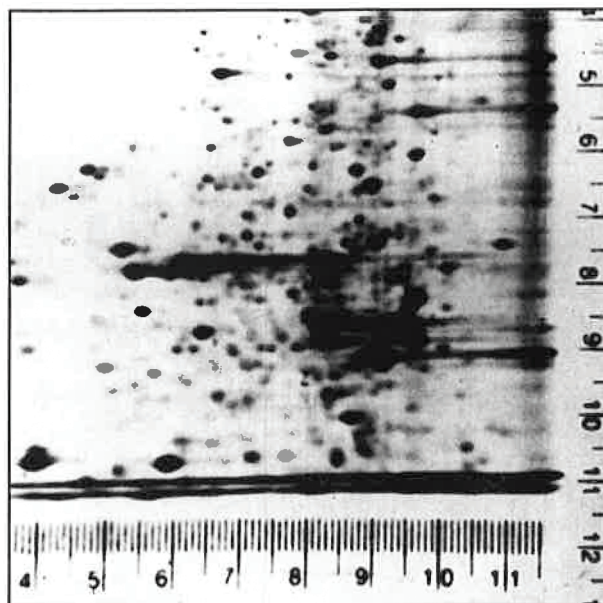
- **Convenient** - Ruler markings facilitate mobility measurements and allow unequivocal orientation and origin determinations.
- **Easy To Use** - Ruler strips are visible under normal lighting and have an adhesive backing which allows for easy positioning.
- **High Resolution** - Non-radioactive phosphorescent emission intensity is adjusted to provide sharp ruler markings on autoradiograms and subsequent photographs.
- **Compatible** - Ruler strips can be used with preflashed film and intensifying screens.

DESCRIPTION

The Autoradiography Ruler Set (ARS) is an orientation and measurement device that exposes metric ruler markings directly onto x-ray film. By means of a specially formulated phosphorescent dye compound and a unique emission filter, the ARS serves as an ideal non-radioactive substitute for radioactive ink markings. The researcher is able to instantly orient the autoradiogram with his gel or blot and is thus able to make easy electrophoretic mobility calculations. Since the phosphorescent emission of each ruler can be regenerated indefinitely, it can be reused any number of times.

The ARS is a set of rulers made of thin strips of coated plastic with an adhesive backing. The ruler can be affixed temporarily to the gel or blot and then removed for reuse after radiography. In normal lighting the metric units are visible as green markings set against a black background. This special shading technique produces a high resolution image that is unaffected by intensifying screens or preflashed film.

The ARS enhances the presentation of autoradiographic data from Southern and Northern blots, as well as one (1D) and two (2D) dimensional gels.



Result of autoradiography with a radioactive 2-D gel and phosphorescent rulers.

INSTRUCTIONS FOR USE

Expose the ruler strip to a direct light source. Hold the ruler 6" from the sources for 10 seconds. Attach a "ruler strip" to the gel or blot support. Use binder clips to insure that the ruler is flush against the film. Expose and develop as usual. The ruler will become visible after a 30 minute exposure and with extended exposures will display the same clarity and intensity.

RPI NO.	SIZE	Qty
ARS-450	200mm x 11mm	4/pkg.